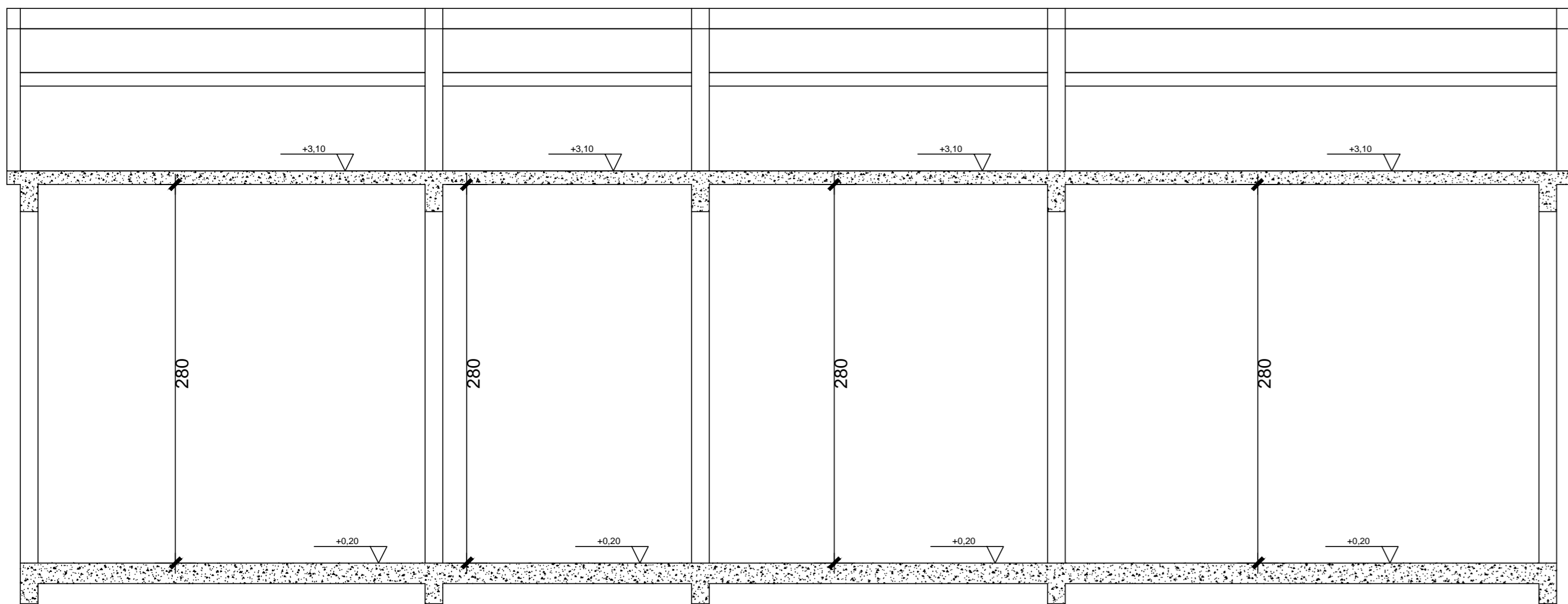
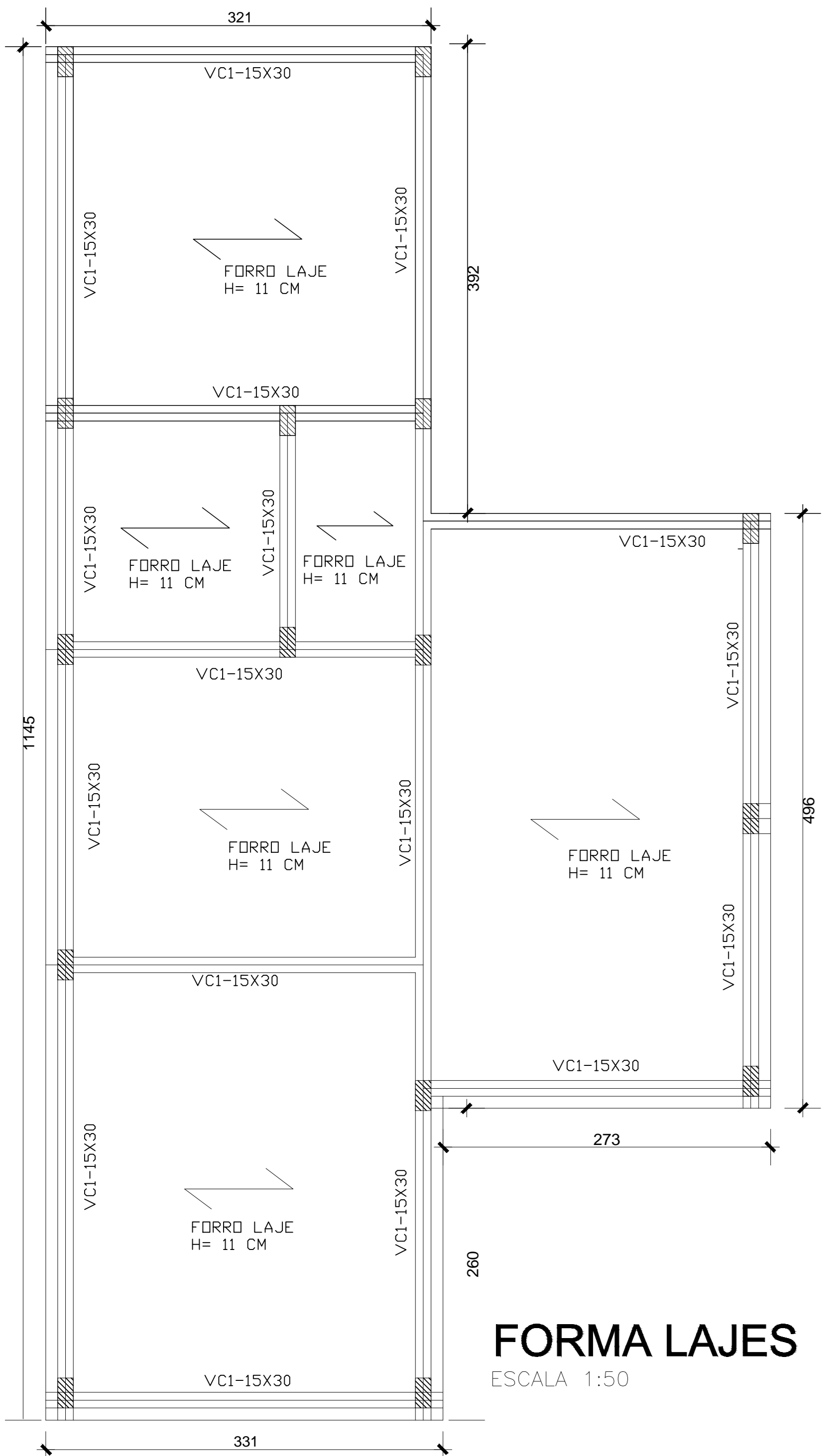


CORTE B-B

FSCALA 1:50

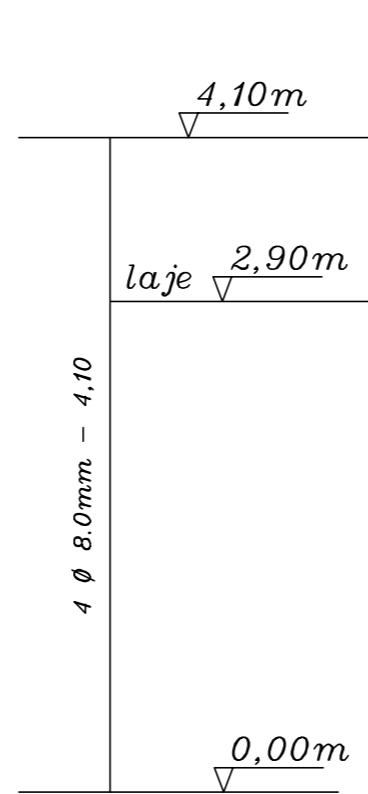
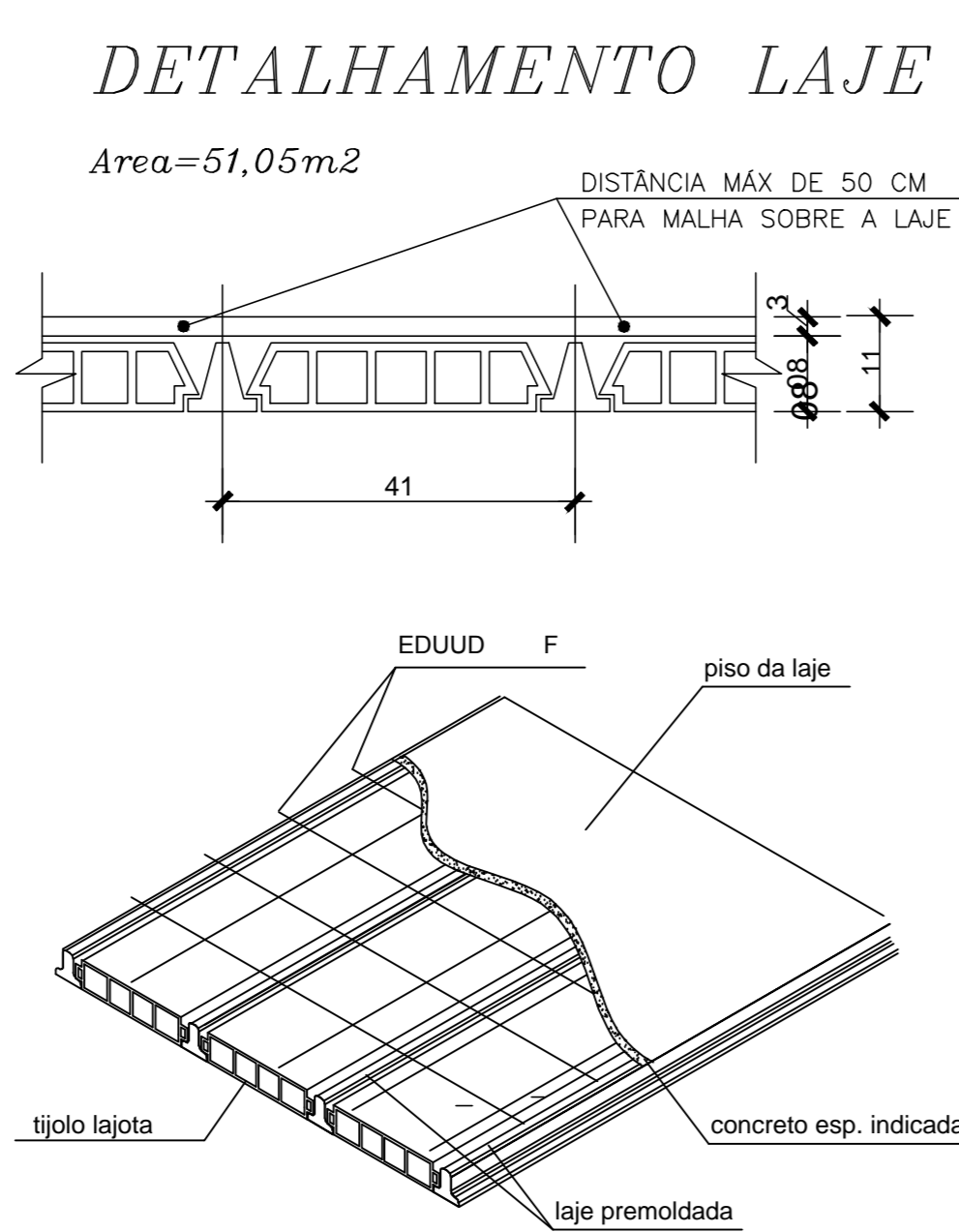


CORTE A-A

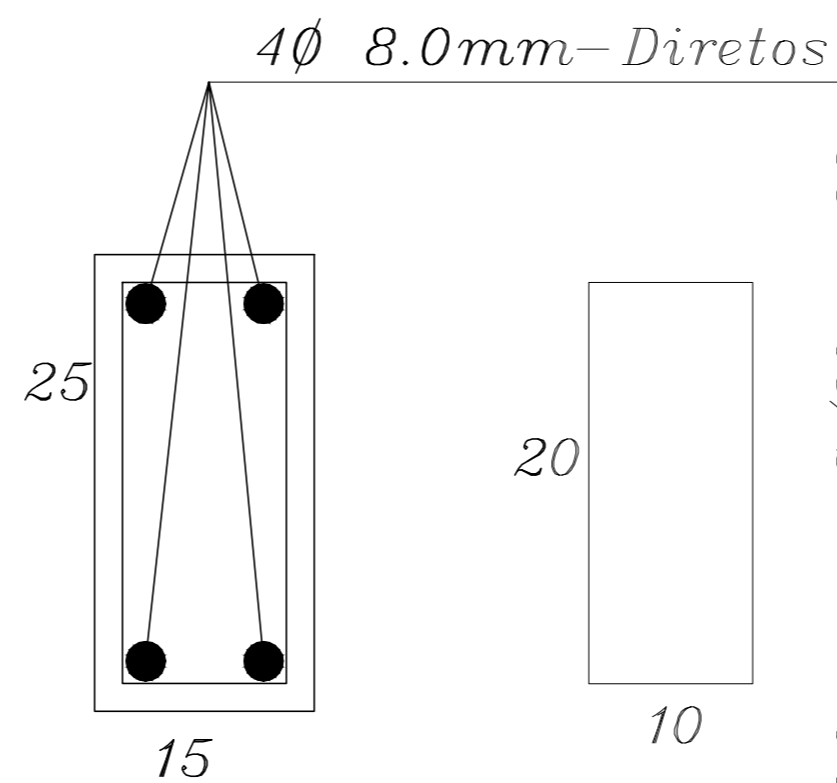


FORMA LAJES

ESCALA 1:50



PILARES - P1 A P12 P15x25 - 12x



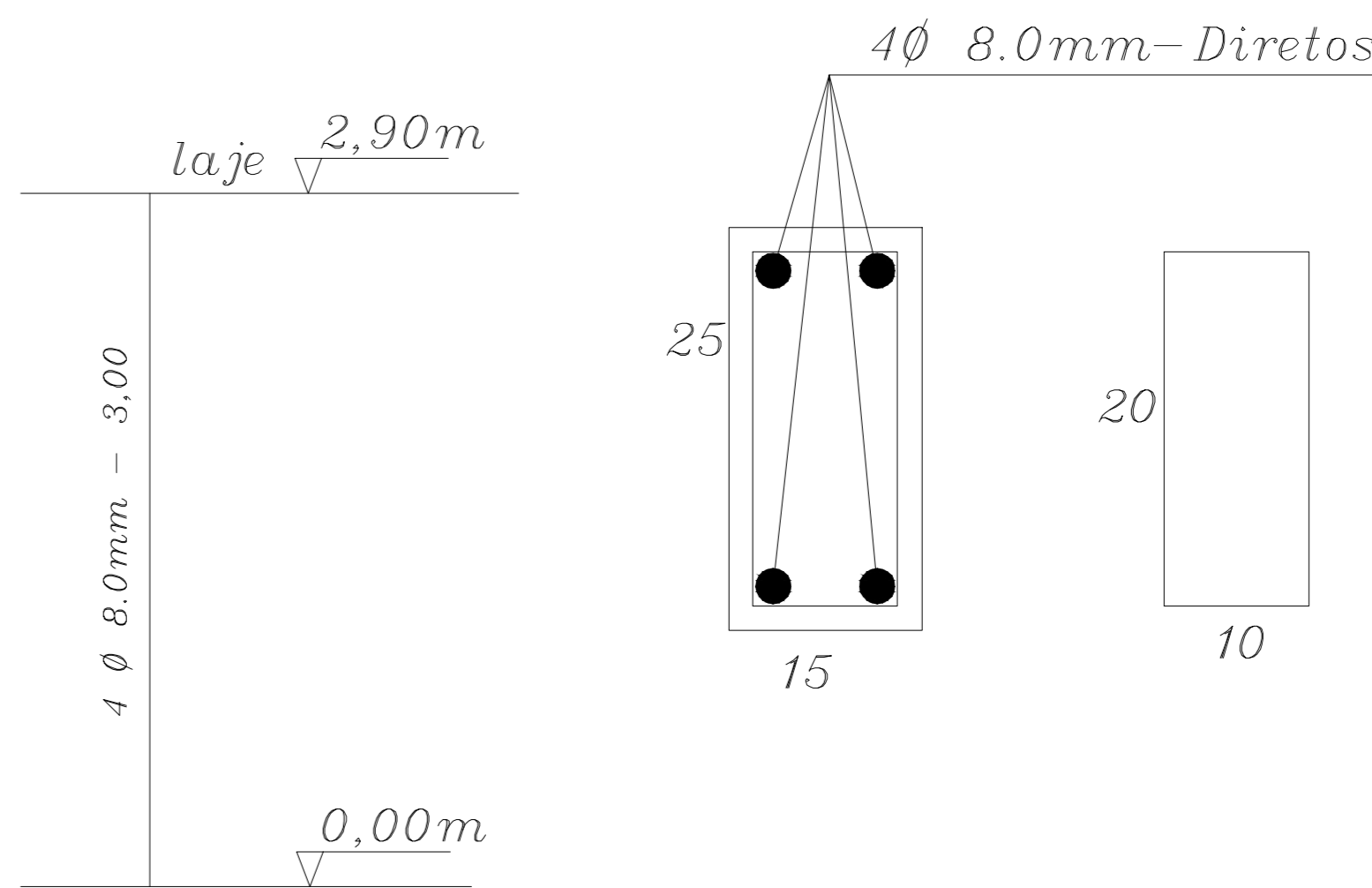
$4\varnothing 8.0mm - Diretos$

$\varnothing 5.0mm - C/20 - 66$

Ferro - 8.0mm - 4,10 x 4 = 16,40m / pilar
Ferro - 8.0mm - 16,40 x 12 = 196,80m
Ferro - 8.0mm - 0,40 Kg/m
Ferro - 8.0mm - 86,59Kg (com 10%)

Ferro - 4.2mm - 12 x 4,10 = 49,20m
Ferro - 4.2mm - 49,20/0,20 = 246 ps
Ferro - 4.2mm - 246 x 0,66m
Ferro - 4.2mm - 162,36m
Ferro - 4.2mm - 0,11 Kg/m
Ferro - 4.2mm - 19,64Kg (com 10%)

Vol. conc. - 0,25*0,15*49,20 = 1,85m³
Forma - (0,25+0,25)*49,20 = 24,60m²



$4\varnothing 8.0mm - Diretos$

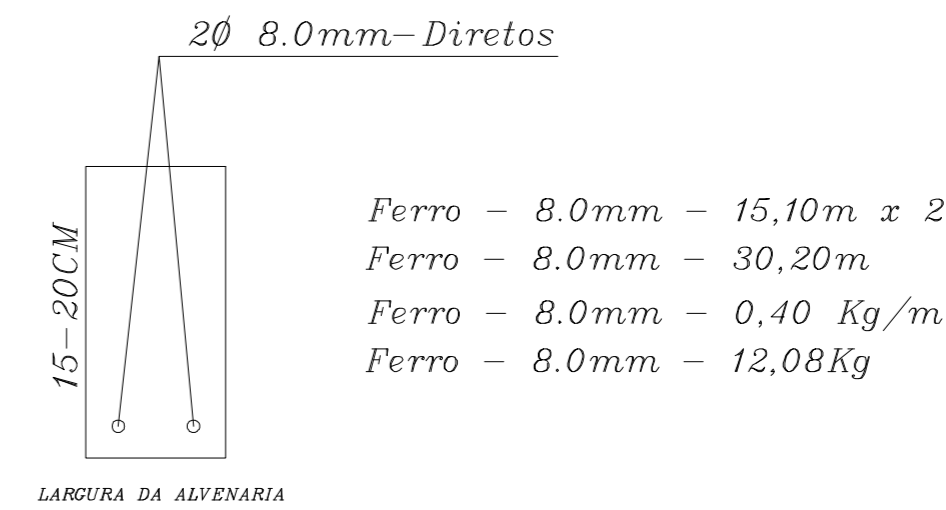
$\varnothing 5.0mm - C/20 - 66$

Ferro - 8.0mm - 3,00 x 4 = 12,00m / pilar
Ferro - 8.0mm - 12,00 x 3 = 36,00m
Ferro - 8.0mm - 0,40 Kg/m
Ferro - 8.0mm - 15,84Kg (com 10%)

Ferro - 4.2mm - 3 x 3,00 = 9,00m
Ferro - 4.2mm - 9,00/0,20 = 45 ps
Ferro - 4.2mm - 45 x 0,66
Ferro - 4.2mm - 26,70m
Ferro - 4.2mm - 0,11 Kg/m
Ferro - 4.2mm - 3,59Kg (com 10%)

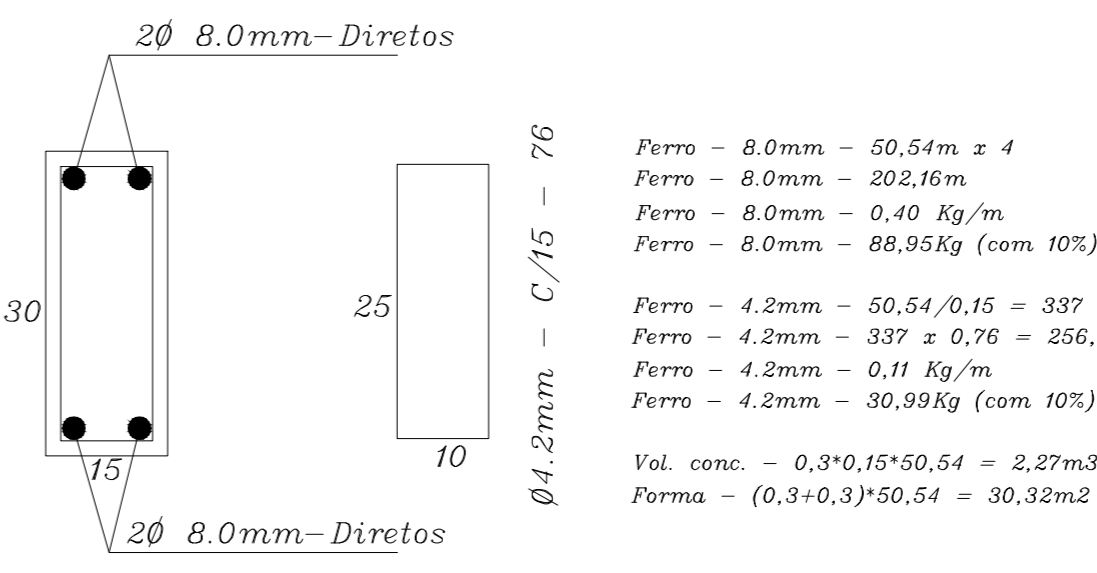
Vol. conc. - 0,25*0,15*12,00 = 0,45m³
Forma - (0,25+0,25)*9,00 = 4,50m²

DETALHE DE VERGAS E CONTRAVERGAS NOS VÃOS DE JANELAS E PORTAS

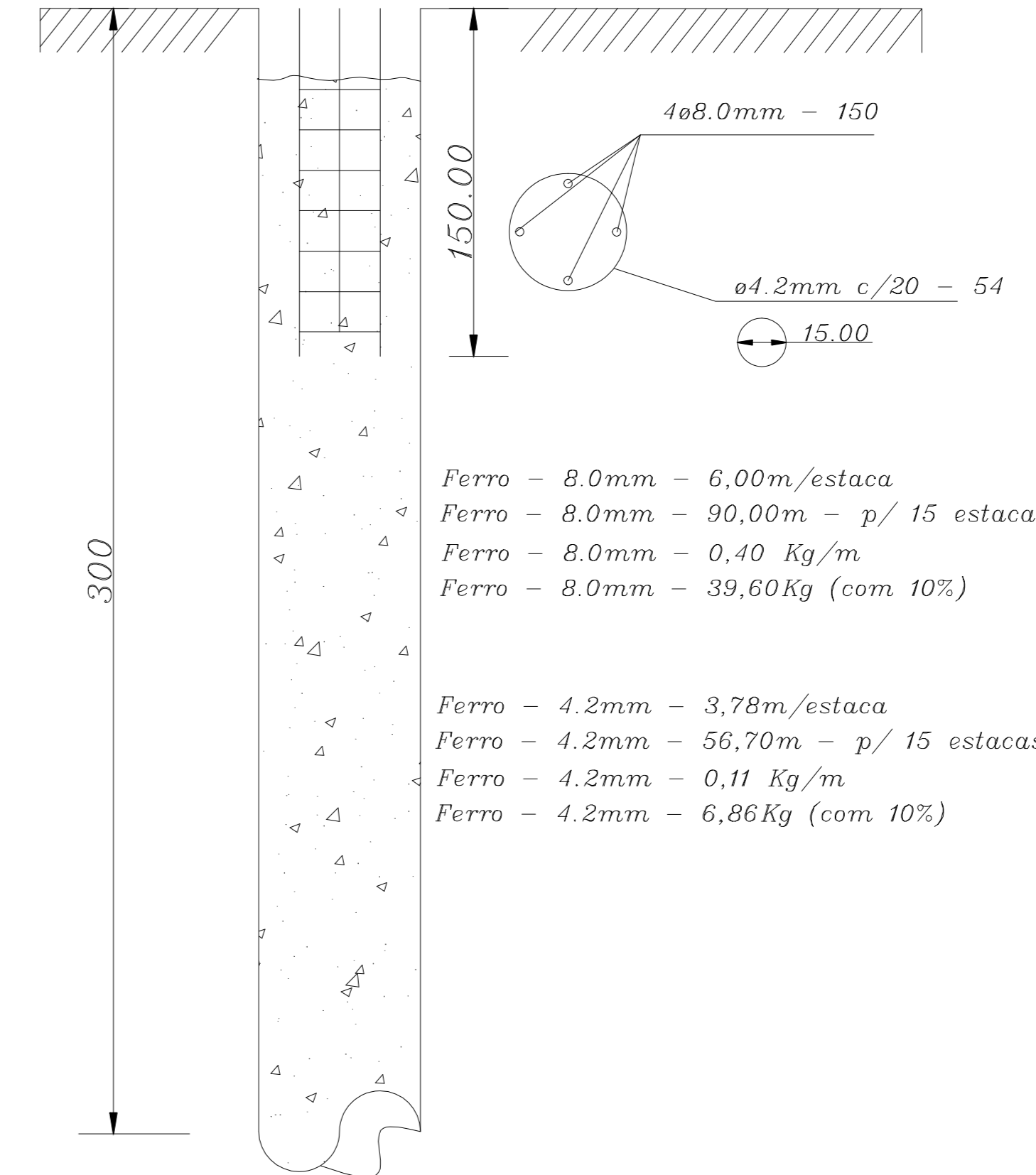
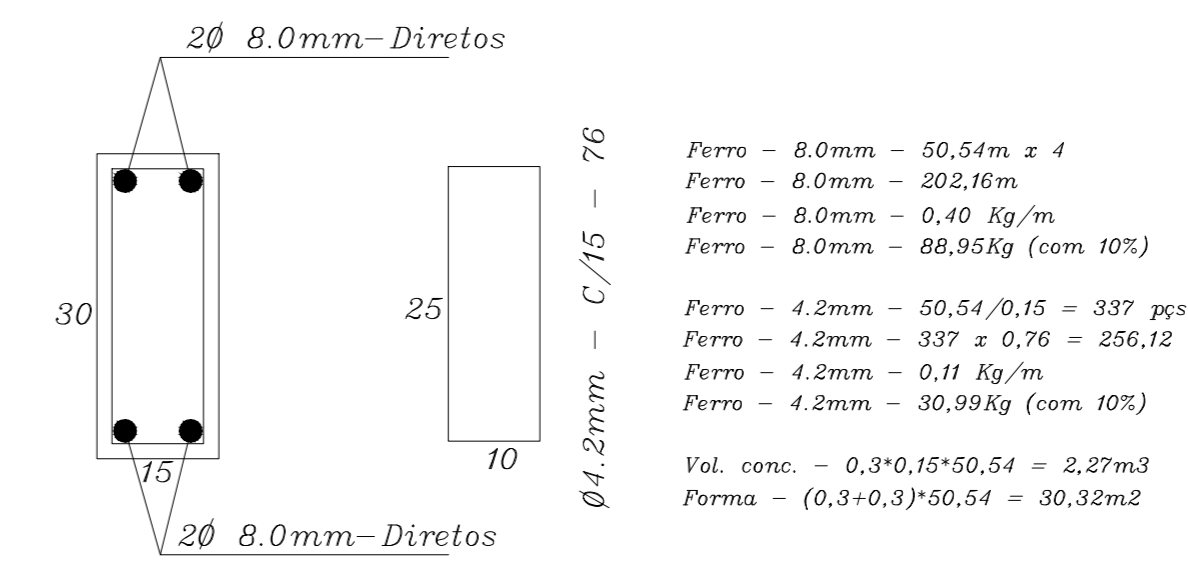


As vergas terão altura entre 15 e 20cm
As ferragens ultrapassarão os vãos em 30cm de cada lado para janelas
As ferragens ultrapassarão os vãos em 20cm de cada lado para portas

BALDRAMES - VB1-15x30 - 50,54m



COBERTURA - VC1-15x30 - 50,54m



LOCAÇÃO ESTACAS

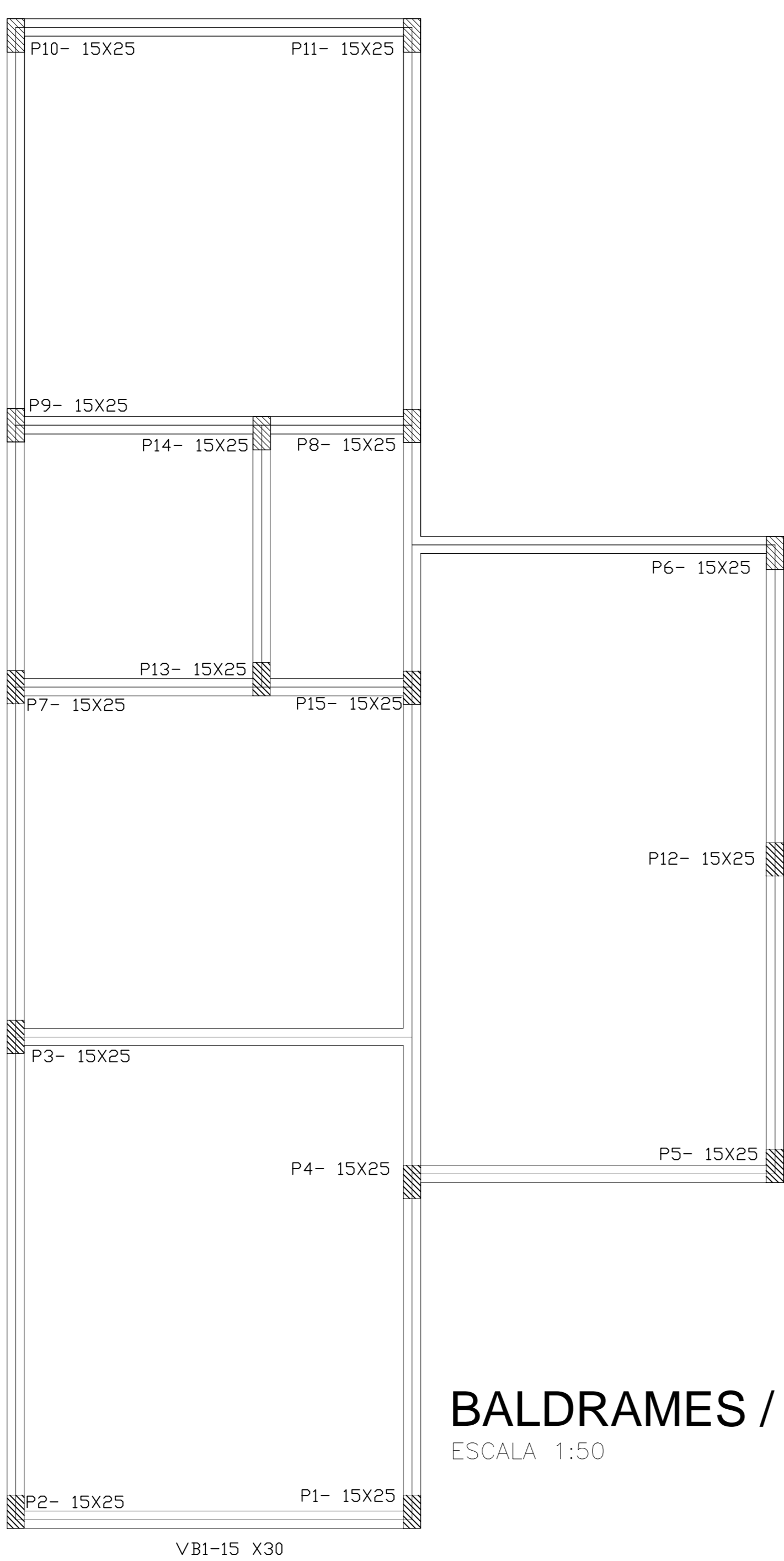
ESCALA 1:50

Tabela Resumo

Estacas
Aço CA-50 8.0mm - 39,60Kg
Aço CA-60B 4.2mm - 6,86Kg
Estrutura
Aço CA-50 8.0mm - 292,41Kg
Aço CA-60B 4.2mm - 85,21Kg
Vol. conc. - 6,84m³
Forma - 89,74m²

Notas:

*Concreto FCK=15Mpa para estacas;
*Concreto FCK=20Mpa para demais elementos estruturais;
*Aço CA50 e CA60;
*Lajes pré-moldadas convencionais;
*Cobrimento na laje de ferro e 3 cm;
*Armadura de distribuição nas lajes Ø 4.2mm;
*Cobrimentos indicados nos respectivos detalhes;
*Beiral em laje 10cm onde indicado



BALDRAMES / PILARES

ESCALA 1:50